



solo per professionisti

Sirman Spa
 Viale dell'Industria 9/11
 35010 PIEVE DI CURTAROLO (PD), Italy
 Tel./Fax. +39 049 9698666 / +39 049 9698688
 email: info@sirman.com

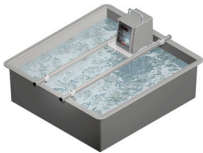
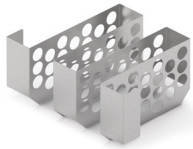


Sirman Softcooker , model Softcooker XP :

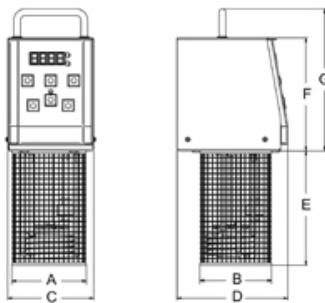
- High precision warmer with temperature control.
- Working temperature display.
- 25 storable programs.
- IP X3 protection rated stainless steel structure.
- Can be applied to the pot by means of a clamp. (max depth 16,5 cm)
- Protection device switches off the warmer in case of accidental use outside the liquid.
- Circulating pump to help the best product mixing.
- Temperature sensor to prevent overload and overheating.

Optionals

- 1/1 GN s/steel container with lid
- 2/1 GN s/steel container with lid
- Lid for better thermal insulation and less waste of heat - Energy Saving!
- Vacuum bags dividing



Data sheet



Technical data

Model	SOFTCOOKER XP	1/1 Gastro	2/1 Gastro
Power	watt 2.000	-	-
Power source	1ph	-	-
Temperature	°C 24÷99	-	-
Bowl capacity	-	lt 27	lt 57,5
Bowl filling capacity	-	lt 22	lt 43
A	mm 110	-	-
B	mm 105	-	-

Softcooker : Softcooker XP

C	mm 130	-	-
D	mm 260	-	-
E	mm 170	-	-
F	mm 170	-	-
G	mm 210	-	-
X	-	mm 565	mm 650
Y	-	mm 360	mm 530
H	-	mm 230	mm 230
Net weight	kg 4.5	kg 7.7	kg 13
Shipping	mm 330x455x240	mm 720x500x350	mm 750x650x590
Gross weight	kg 5.5	kg 11.5	kg 16
HS-CODE	85161080		